



Highway Maintenance **Solutions**

Confidence. Innovation. Durability.



ultracrete.co.uk

| Contents

About us	04
Product Acceptance Schemes	06
Bedding Mortars	11
Concretes	25
Hot and Cold Lay Surfacing Materials	37
Construction Materials	49
Ancillaries	53
UCARS	64
Testimonials	65
Instarmac Brands	67
Reducing our Environmental Impact	68-69
Quick Product Guide	70-71



About us

Award Winning. Global. Experienced. Responsible. Employee and Client focused.

We are a **multi award-winning market leading company**. A specialist manufacturer of cement and bitumen based products to the world market for over 40 years. We have built a solid reputation based on the research, development and production of innovative materials for use in highway maintenance, urban regeneration, tiling, commercial flooring and internal finishing solutions.

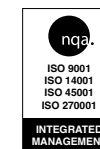
We are committed to providing high specification products that are durable, proven and independently tested, backed up by first class customer, technical and site support.

Manufacturing has been at the heart of Instarmac since 1977, and today products are produced in a modern automated facility and sold to contractors, distributors and stockists worldwide.

Our own research and development laboratory means we are always at the forefront of today's technology. Rigorous testing in-house and through certified external bodies offers you the reassurance of a quality guarantee.



Excellence as standard



We are committed to continuously re-evaluating and reducing our environmental impact to encourage a positive, long-term future and have been recognised and awarded several times for our initiatives. Tapping into the initiative of our staff, continually working with suppliers to take advantage of the most energy and waste efficient products and procedures, and employing the latest available technologies, means we are always achieving a year-on-year improvement in our performance.

Our latest efforts have meant the successful implementation of zero waste to landfill from January 2014. We strive to be pioneering in our corporate social responsibility activities, the working environment we maintain, our culture and the rewards we provide.

We have been recognised as a Sunday Times Top 100 Company with a 3-star Best Companies rating for 9 years and have been listed in their International Track 200 which ranks Britain's mid-market private companies with the fastest growing international sales. All our processes and systems are certified to ISO 9001, ISO 14001, ISO 45001 and ISO 27001 respectively. We have been named as Employer of the Year by Price Waterhouse Cooper, recognised as a Great Place To Work® and have been commended for our health and safety processes winning the highly coveted Gold Award from RoSPA (Royal Society for the Prevention of Accidents) nine years running.

Delivery

All processed orders are automatically confirmed by email to you. Our privately owned, FORS Silver accredited fleet, is managed and fully tracked in-house. Live tracking technology means that we can tell you exactly where your delivery is. Our system will automatically text you when your delivery is only 30 minutes away. A second-to-none delivery service that is speedy, convenient and reliable.



Get in touch | 01827 254400 | ultracrete@instarmac.co.uk

Product Acceptance Schemes

Trusted. Proven. Fit for Purpose.

All products used on our road network need to be assessed and certified through a UKAS accredited Certification Body to demonstrate they conform to the standards of performance set out in the Specification for Highway Works (MCHW SHW) and the Specification for the Reinstatement of Openings in Highways (SROH), which guarantees long-term performance.

Two such Certification Bodies who offer industry-recognised certification are the British Board of Agrément (BBA), who provide BBA PAS certificates and Pavement Testing Services Ltd (PTS) who provide PTS PAS certification.

Both BBA and PTS are supported in their product acceptance schemes (PAS) and certification by a Technical Supervisory Panel, which includes representation from key industry bodies including National Highways, Environment, Economy, Planning and Transport (ADEPT), Road Surface Treatments Association (RSTA), and the Highways Authorities & Utilities Committee HAUC (UK).

Products certified through BBA and PTS are proven to not only meet the test and performance criteria required to withstand the demands of our carriageways and footpaths, but also provide peace of mind that all certified products have been developed by manufacturers with strong quality management systems, strict process control and manufacturing consistency and traceability.



PAS The System

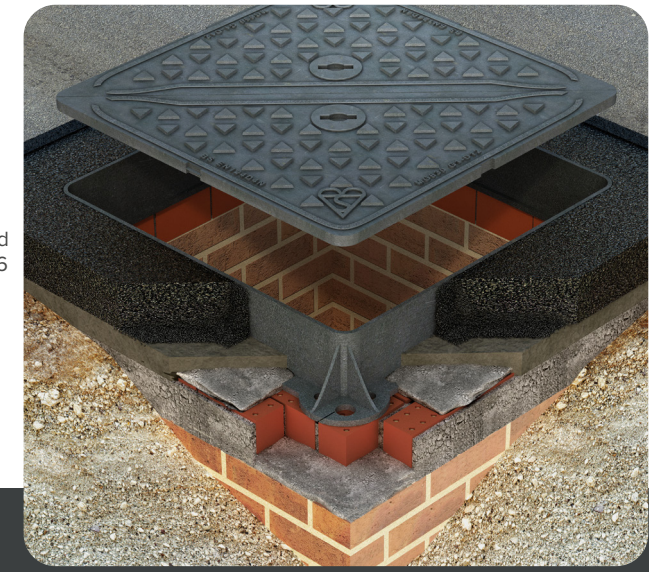
Surface Finish:
SCJ Seal and Tack Coat Spray, see page 44

Instant Road Repair
Cold Lay Asphalt Concrete
6mm or 10mm, see pages 40-41

Backfill Concrete:
QC10 F Flowable Fast Set Rapid Strength Concrete, see page 26

QC10 Fast Set Rapid Strength Concrete, see page 27

Envirobed® CD534 Flowable
High Performance Bedding Mortar, see page 13



Overbanding:
Instaband ECO® Thermoplastic Skid Resistant Overbanding, see page 55

Bedding Mortar:
M60 F Rapid Strength, Fibre Reinforced Bedding Mortar, see page 17

M60 Fast Setting Rapid Strength Bedding Mortar, see page 16

Envirobed® CD534 High Performance Bedding Mortar, see page 12

PY4 Polyester Resin Fast Setting Bedding Mortar, see page 22

The benefits:

- A first time permanent repair solution
- Reduction in total cost of ownership
- Protects professional indemnity insurance
- Reduces costly failures which can result in personal injury claims
- Exceeds a 5 year service life with no risk of split liability
- Trusted and widely used by Highways Contractors, Local Authorities and Utility Suppliers
- Allows sites to be open to traffic from break out to completion, in as little as 2 hours

Reinstating an access cover - traditional method

Excavation and Chamber Preparation

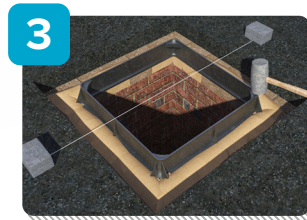


1
A picture frame is saw cut and excavated and the existing cover and frame removed.



2
Old bedding mortar, loose bricks and debris are removed.

Bedding & Backfill



3
Apply UltraCrete bedding mortar (M60, M60 F, PY4 or Envirobed® CD534) to the supporting structure and lower frame into position.



4
Once the bedding mortar has set, backfill with UltraCrete QC10 F, QC10, Envirobed® CD534 Flowable or PY5.

Tack coat



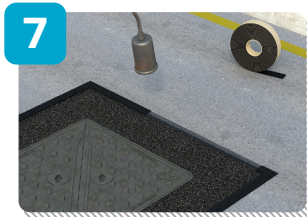
5
UltraCrete SCJ edge sealant and bitumen tack coat should be applied to all edges of the trim back and new frame.

Surface Course



6
Surface finish with UltraCrete Instant Road Repair or Tough Patch cold lay asphalt concrete if located on a footpath, or category 3 & 4 road.

Overbanding



7
Once the surface course is levelled, apply UltraCrete Instaband ECO® thermoplastic overbanding to the edges of the reinstatement.



Reinstating an access cover - using Mortar Buoy® innovative installation aid

Excavation and Chamber Preparation

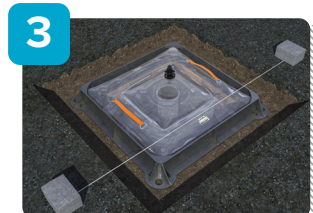


1 A picture frame is saw cut and excavated and the existing cover and frame removed.

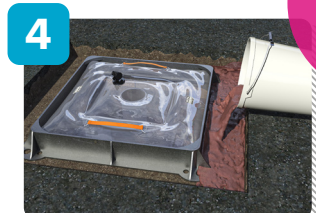


2 Old bedding mortar, loose bricks and debris are removed.

Bedding & Backfill



3 Inflate UltraCrete Mortar Buoy® within the chamber, creating a dam. Lower frame into position.



4 Apply Envirobred® CD534 Flowable red or standard around the frame. Once cured, Mortar Buoy® is removed.

See page 58 for further information on Mortar Buoy®

Tack coat



5 UltraCrete SCJ edge sealant and bitumen tack coat should be applied to all edges of the trim back and new frame.

Surface Course



6 To provide longevity of service life in high stress areas such as braking and turning areas, use Enviro Mastic® Hot Applied Polymer Modified Mastic Asphalt.

Overbanding



7 Once the surface course is compacted, apply UltraCrete Instaband ECO® thermoplastic overbanding to the edges of the reinstatement.

Bedding Mortars

A range of high performance, rapid setting bedding mortars for the reinstatement and installation of all types of ironwork, access covers and frames. Comprising of **PAS, CD534** and **Openreach LN550/LN320** compliant materials, that provide first time permanent installations, early trafficking, increased productivity, a reduction in section 74 fines, and a vastly reduced whole life cost.

Envirobed® CD534

High Performance Bedding Mortar



The environmentally friendly alternative to resin-based materials, specifically formulated for the bedding of all access covers.

- **Workability:** 15 minutes
- **Set Time:** 30 minutes
- **Depth:** 10mm-50mm
- 53N/mm² compressive strength in 3 hours
- 12N/mm² flexural strength in 3 hours
- 6.10N/mm² tensile strength in 3 hours
- No hazardous waste disposal
- Can be used in wet conditions and in temperatures as low as 1°C



- ✓ BBA PAS Approved
- ✓ Conforms to CD534
- ⌚ Superior compressive, tensile & flexural strengths in 3 hours
- 🔄 Open to traffic: 1 hour

Packaging

- 18kg paper bag & 2.5l plastic bottle (48 units per pallet)
- 18kg bucket includes 2 x 8kg bags and 2 x 1l bottles (40 units per pallet)
- Bucket and bottle made from recycled material

Envirobed® CD534 Flowable

High Performance Bedding Mortar



Specifically formulated for utility reinstatements. Provides all of the performance of Envirobed® CD534 but is significantly easier to apply. Great for bedding large section manhole covers and frames.

- **Workability:** 15 minutes
- **Set Time:** 30 minutes
- **Depth:** 10mm - 75mm
- 44N/mm² compressive strength in 3 hours
- Combines as a bedding mortar & backfill
- 9.5N/mm² flexural strength in 3 hours
- 5.5N/mm² tensile strength in 3 hours
- No hazardous waste disposal
- Can be used in wet conditions and in temperatures as low as 1°C

- ✓ BBA PAS Approved
- ✓ Conforms to CD534
- ✓ LN320 compliant
- ⌚ Superior compressive, tensile & flexural strengths in 3 hours
- 🔄 Open to traffic: 1 hour
- ✓ Aids lateral stability

Packaging

- 18kg paper bag & 2.5l plastic bottle (48 units per pallet)
- Bottle made from recycled material



Envirobed® CD534 Red

High Performance Bedding Mortar



The environmentally friendly alternative to resin-based materials, specifically formulated for the bedding of all access covers.

- **Workability:** 15 minutes
- **Set Time:** 30 minutes
- **Depth:** 10mm-50mm
- 53N/mm² compressive strength in 3 hours
- 12N/mm² flexural strength in 3 hours
- 6.10N/mm² tensile strength in 3 hours
- No hazardous waste disposal
- Can be used in wet conditions and in temperatures as low as 1°C



- ✓ BBA PAS Approved
- ✓ Conforms to CD534
- ✓ BT LN550 Compliant
- ⌚ Superior compressive, tensile & flexural strengths in 3 hours
- 🚚 Open to traffic: 1 hour

Packaging

- **18kg bucket includes 2 x 8kg bags and 2 x 1L bottles** (40 units per pallet)
- **Bucket made from recycled material**

Envirobed® CD534 Flowable Red

High Performance Bedding Mortar



Specifically formulated for utility reinstatements. Provides all of the performance of Envirobed® CD534 but is significantly easier to apply. Great for bedding large section manhole covers and frames.

- **Workability:** 15 minutes
- **Set Time:** 30 minutes
- **Depth:** 10mm-75mm
- 44N/mm² compressive strength in 3 hours
- Combines as a bedding mortar & backfill
- 9.5N/mm² flexural strength in 3 hours
- 5.5N/mm² tensile strength in 3 hours
- No hazardous waste disposal
- Can be used in wet conditions and in temperatures as low as 1°C



- ✓ BBA PAS Approved
- ✓ Conforms to CD534
- ✓ Openreach LN550 and LN320 compliant
- ⌚ Superior compressive, tensile & flexural strengths in 3 hours
- 🚚 Open to traffic: 1 hour
- ✓ Aids lateral stability

Packaging

- **18kg paper bag & 2.5l plastic bottle** (48 units per pallet)
- **Bottle made from recycled material**

M60

Rapid Strength Bedding Mortar



- ✓ BBA PAS approved
- ✓ Conforms to HD27/15
- ⌚ Rapid strength gain
- 🚶 Open to traffic: 1 hour
- ✓ Shrinkage compensated

Packaging

- 25kg paper bag (56 units per pallet)
- 25kg bucket (40 units per pallet)
- Bucket made from recycled material



M60 F

Rapid Strength, Fibre Reinforced Bedding Mortar



- ✓ BBA PAS Approved
- ✓ Fibre reinforced
- ✓ Conforms to HD27/15
- ✓ Contains minimum 20% recycled material
- 🚶 Open to traffic: 1 hour
- ✓ Shrinkage compensated

Packaging

- 25kg paper bag (56 units per pallet)
- 25kg bucket (40 units per pallet)
- Bucket made from recycled material

Our market leading, rapid strength mortar, with added fibres for superior strength gain. Ideal for use with all access covers, as well as for the bonding of granite setts, flags and bedding kerbs.

- **Workability:** 5–10 minutes
- **Set Time:** 20 minutes
- **Depth:** 10mm-75mm
- 25N/mm² compressive in 1 hour
- 38N/mm² compressive strength in 1 day
- 6N/mm² flexural strength in 1 day



M45

Rapid Strength, Bedding and Repair Mortar



For use with all access covers, emergency concrete road repairs, bedding and profiling of kerbs and tidal repair projects.

- **Workability:** 5-10 minutes
- **Set Time:** 15 minutes
- **Depth:** 10mm-75mm
- 20N/mm² compressive strength in 45 minutes
- Shrinkage compensated



- Rapid strength gain
- Conforms to HD27/15
- Excellent workable consistency
- Open to traffic: 45 minutes
- Fast setting

Packaging

- **25kg paper bag** (56 units per pallet)
- **25kg bucket** (40 units per pallet)
- **Bucket made from recycled material**

M90

All Purpose, Fast Set Mortar



Ideal for bedding access covers and general repairs.

- **Workability:** 5–10 minutes
- **Set Time:** 20 minutes
- **Depth:** 10mm-75mm
- Consistently achieves 22N/mm² compressive strength in 90 minutes at 5°C, 10°C, 15°C and 20°C.



- All purpose
- Conforms to HD27/15
- Rapid strength gain
- Economical
- Open to traffic: 90 minutes

Packaging

- **25kg paper bag** (56 units per pallet)
- **25kg bucket** (40 units per pallet)
- **Bucket made from recycled material**

RESI-BED

Epoxy Bedding and Concrete Repair Mortar



Ideal for bedding access covers, specialist utility covers and for high strength concrete repairs.

- **Workability:** 30 minutes
- **Set Time:** 90 minutes
- **Open to traffic:** 6 hours
- **Depth:** 5mm-50mm
- 75N/mm² compressive strength in 7 days
- 22.4N/mm² flexural strength in 7 days
- 15.6N/mm² tensile strength in 7 days

Resin Mortars

Our heavy duty, resin based mortars are ideal for use in highly trafficked areas. Offering superior compressive, tensile and flexural strengths, these mortars offer consistent performance and provide a first time permanent solution for bedding ironwork in areas subjected to extreme wear and tear and high water pressure.



Chemical resistant



Waterproof



Excellent bond strength 45N/mm²



Packaging

- **10kg bucket**
(60 units per pallet)
- **22kg bucket**
(39 units per pallet)

PY4

Polyester Resin System



- ✓ BBA PAS approved
- ⌚ Rapid strength gain
- 🔨 61.5N/mm² compressive strength gain in 1 hour
- 🚶 Open to traffic: 40 minutes
- ✓ Conforms to CD534

Packaging

- 25kg bucket (30 units per pallet)



PY5

Flowable Polyester Resin System



- ✓ Withstands extreme wear and tear
- ✓ Conforms to CD534
- ⌚ Rapid setting time
- ⌚ 85N/mm² compressive strength gain in 1 hour
- 🚶 Open to traffic: 40 minutes

Packaging

- 25kg bucket (30 units per pallet)

Ideal for anchoring bolts or bars, the bedding of lights in carriageways, backfill of access covers and sealing surface cracks.

- **Workability:** 5–10 minutes
- **Set Time:** 15 minutes
- **Depth:** 5mm-50mm
- 21N/mm² flexural strength in 1 hour
- 7.28N/mm² tensile strength in 1 hour





Concretes

Our single and two-part concrete mixes cater for a range of light to heavy duty applications and include **PAS**, vandal proof, fast setting, early strength gain materials for backfilling, ring beam construction, surfacing and post installation.

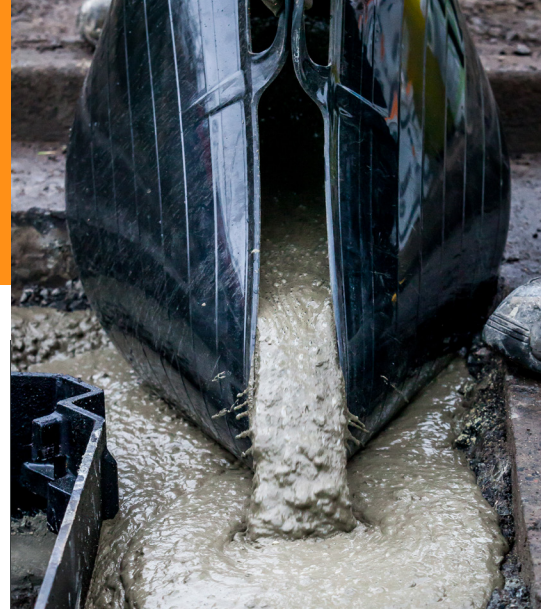
QC10 F

Rapid Set Flowable Concrete



A fibre reinforced concrete designed for thick section repairs, haunching reinstatements, ironwork backfilling, commercial sign/post installation surface repairs and ring beam construction.

- **Workability:** 5-10 minutes
- **Set time:** 10-20 minutes
- **Depth:** 30mm-500mm
- 20N/mm² compressive strength after 90 minutes
- Shrinkage compensated



- ✓ BBA PAS Approved
- ✓ Fibre modified
- ⌚ Rapid set
- 🚗 Open to traffic: 90 minutes

Packaging

- 25kg plastic bag (56 units per pallet)

QC10

Rapid Strength Concrete



Designed for backfilling around access frames and gullies.

- **Workability:** 5-10 minutes
- **Set Time:** 20 minutes
- **Depth:** 30mm-250mm
- 20N/mm² compressive strength in 2 hrs
- Can be bulked out in certain applications*

*May affect performance



- ✓ BBA PAS Approved
- ⌚ Rapid set
- 🚗 Open to traffic: 2 hours

Packaging

- 25kg plastic bag (56 units per pallet)

QC6

Surface Reinstatement Concrete



A non-shrink concrete designed for the surface reinstatement of 'picture frames' or fillets around access covers and surface areas around street furniture.

- **Workability:** 5-10 minutes
- **Open to traffic:** 2 hours
- **Depth:** 12mm-100mm
- 57N/mm² compressive strength at 28 days



- ✓ Shrinkage compensated
- ✓ Excellent workability
- ✓ Anti-vandal
- ⌚ Rapid set: 15 minutes

Packaging

- **25kg paper bag** (56 units per pallet)
- **25kg bucket** (40 units per pallet)
- **Bucket made from recycled material**

Flowcon

Self-Compacting Concrete



High specification C50 concrete in a bag, ideal for applications with limited site access where bulk concrete cannot be delivered.

- **Workability:** 60 minutes
- **Set Time:** 6 hours
- **Depth:** 30-500mm
- Pre-blended cement for a consistent quality mix



- ✓ Great for areas with limited access
- ⚒ High compressive strength 55N/mm²
- ✓ Flowable
- ✓ Easily Transportable

Packaging

- **25kg plastic bag** (56 units per pallet)

FTC

Fast Track Concrete



Fibre modified concrete, suitable for small and large reinstatements to concrete car parks, warehouses and bridge decks.

- **Workability:** 20 minutes
- **Depth:** 10mm to 50mm
- **Set Time:** 60 minutes
- Pre-blended, just add water



66N/mm² compressive strength



Foot traffic: 2 hours



Fibre reinforced



Shrinkage compensated



Packaging

- 25kg paper bag (56 units per pallet)

Super Fix

Single Part Post Mix



A single part post mix suitable for installing light duty posts, fences and poles.

- **Workability:** Ready to use, pour powder into hole and just add water
- 25N/mm² compressive strength at 28 days



Light duty applications



Pre-blended



Rapid set: 15 minutes



Packaging

- 25kg paper bag (56 units per pallet)

Post Fix

Rapid Hardening Concrete



A 10mm concrete formulated for sub-surface use and fast installation of posts, signs, fences, street lighting, speed cameras and road side barriers.

- **Workability:** 5-10 minutes
- **Set Time:** 15 minutes
- Two-part mix
- Utilises 10mm ballast for added strength



- ✓ Professional grade
- ✓ Easy mix
- 🕒 Fast set
- 🔨 41N/mm² compressive strength

Packaging

- **25kg plastic bag**
(56 units per pallet)

Kerb And Patch Repair

Rapid Setting Kerb and Patch Repair



Ideal for the reinstatement of small areas requiring less than a ready-mix quantity for example, the reinstatement of trip hazards, kerbs and steps.

- **Workability:** 7 minutes
- **Set Time:** 25 minutes
- **Depth:** 10mm–100mm
- 50N/mm² compressive strength at 28 days
- 8.09N/mm² tensile strength at 28 days
- Polymer enhanced for added strength

- 🔨 High strength
- ✓ No waste
- 🚗 Open to traffic: 2 hours

Packaging

- **10kg bucket** (contains cement bag & polymer bottle)
(50 units per pallet)



Perma-Soil

Soil Stabiliser



Turns excavated spoil into backfill within minutes. Ideal for use with small utility excavations, backfilling poles, water meters and water tobies.

- **Initial Set Time:** 60 minutes
- Quick and easy to use in-situ
- Eliminates the need/cost to haul away spoil
- Meets the requirements set out in the Utility WRAP Agreement



- ✓ A9 compliant in accordance with A9.5.3 of the SROH
- ✓ Reduces the need for virgin aggregates
- ✓ Can be re-excavated
- ✓ Cost saving

Packaging

- **25kg plastic bag**
(54 units per pallet)
- **25kg bucket**
(30 units per pallet)
- **12.5kg bucket**
(56 units per pallet)





Hot and cold lay surfacing materials

PAS, Highways Approved, first time permanent patching materials for high performance planned and reactive repairs. Offering a proven repair solution that is durable, instantly trafficable and vastly reduces your total cost of ownership. Get it right first time with our range of hot and cold lay surfacing materials.

Tough Patch® 6MM

Permanent Cold Lay Surface Material



Manufactured using renewable binder additives

An instant solution for utility apparatus installations and reinstatements, permanent repairs and patching in footpaths and temporary pothole repairs in carriageways.

- First time, permanent, emergency and temporary repairs
- Rapid curing, instantly trafficable
- High deformation performance and rut resistance
- Use with UltraCrete SCJ Seal and Tack Coat spray for a permanent repair
- Use in all weather
- Easy to use and apply
- **Depth:** 15mm-60mm



- ✓ PTS PAS Approved
- ✓ Can be cored after 24 hours
- ✓ Contains renewable binder materials
- ✓ Innovative reactive binder
- ✓ Solvent free



Packaging

- **25kg foil bag** (40 units per pallet)
- **25kg bucket** (52 units per pallet)

Tough Patch® 10MM

Permanent Cold Lay Surface Course



Manufactured using renewable binder additives

For permanent repairs in type 3 & 4 roads and temporary / emergency repairs in higher category roads.

- First time, permanent, emergency and temporary repairs
- Rapid curing, instantly trafficable
- High deformation performance and rut resistance
- Use with UltraCrete SCJ Seal and Tack Coat spray for a permanent repair
- Use in all weather
- Easy to use and apply
- **Depth:** 30mm-100mm



- ✓ PTS PAS Approved
- ✓ Can be cored after 24 hours
- ✓ Contains renewable binder materials
- ✓ Innovative reactive binder
- ✓ Solvent free



Packaging

- **25kg foil bag** (40 units per pallet)
- **25kg bucket** (52 units per pallet)

Instant Road Repair 6mm

Cold Lay Asphalt Concrete



For permanent repairs in footways, footpaths and cycle tracks. Also available in red, ideal for repairs to cushions and ramps, cycle tracks, bus stops and colour coded car parking.

- Suitable for planned and reactive repairs
- **Depth:** 15mm-100mm
- Can be used in all weathers
- Resealable tubs
- Use with SCJ Seal and Tack coat spray for a permanent repair

UltraCrete Instant Road Repair® 6mm is satisfactory for use as a PCSM in accordance with Appendix A2.4 of the New Roads and Street Works Act 1991 : Specification for the Reinstatement of Openings in Highways (SROH), Third Edition, April 2010.

Instant Road Repair 10mm

Cold Lay Asphalt Concrete



For permanent repairs in type 3 and 4 roads.

- Suitable for planned repairs
- **Depth:** 30mm-100mm
- Can be used in all weathers
- Resealable tubs
- Use with SCJ Seal and Tack coat spray for a permanent repair

UltraCrete Instant Road Repair® 10mm is satisfactory for use as a PCSM and a PCSC in accordance with Appendix A2.4 of the New Roads and Street Works Act 1991 : Specification for the Reinstatement of Openings in Highways (SROH), Third Edition, April 2010.

- ✓ BBA PAS Approved
- ✓ First time permanent
- ✓ 6mm grade
- ♻ Instantly trafficable
- ✓ No waste

Packaging

- **25kg foil bag**
(56 units per pallet)
Not available in red
- **25kg bucket**
(52 units per pallet)
- **Bucket made from recycled material**

- ✓ BBA PAS Approved
- ✓ First time permanent
- ✓ 10mm grade
- ♻ Instantly trafficable
- ✓ No waste

Packaging

- **25kg foil bag**
(56 units per pallet)
- **25kg bucket**
(52 units per pallet)

Permanent Pothole Repair

Cold Lay Asphalt Concrete



Ideal for the repair of potholes in roads, driveways and car parks.

- Suitable for planned and reactive repairs
- Use with SCJ Seal and Tack coat spray for a permanent repair
- SRV ≥ 88
- **Depth:** 10mm-100mm
- Resealable tubs



- ✓ BBA PAS Approved
- ✓ Instantly trafficable
- ✓ No waste
- ✓ Easy to use

Packaging

- **25kg bucket**
(52 units per pallet)

Permanent Pothole Repair Wet

Cold Lay Asphalt Concrete



- ✓ Made for use in the wet
- ✓ Withstands hydraulic stress
- ✓ Instantly trafficable
- ✓ No waste

Permanent Pothole Repair Wet is a modified formulation which delivers a more durable result in wet conditions. If the pothole is clean but water has collected in it, PPR WET can be applied. Suitable for the repair of potholes in roads, driveways and car parks.

- Helps prevent washout
- Suitable for planned and reactive repairs
- SRV ≥ 88
- No need to prime
- Can be used in all weathers
- **Depth:** 10mm-100mm
- Resealable tubs

Packaging

- **25kg bucket**
(52 units per pallet)

Enviro Mastic®

Hot Applied, Polymer Modified Mastic Asphalt



A hot applied, polymer modified mastic asphalt, that gives superior performance when used to repair and patch carriageways, footpaths, footways and cycle tracks or as a surface finish when installing street furniture and access covers.

- **Open to traffic:** 1 hour
- Long-term wear resistance
- No mechanical compaction required
- No waste
- **Depth:** 50mm - 150mm



- ✓ PTS PAS Approved
- ✓ No voids
- ✓ Ideal for remote locations
- ✓ First time permanent repair

Packaging

- 20kg bag (50 units per pallet)

SCJ

Seal and Tack Coat Spray



A cold joint sealer that is applied onto vertical edges and surface base before the application of asphalt.

- Can be used in all weathers
- Simple and economical to apply
- No waste

Conforms to the SROH part S6.5.2.2 Edge Sealing 'the top 100 mm, at least, of all bound vertical edges at surface course and binder course levels, and the equivalent area on kerbs and exposed fixed features, shall be painted with a bitumen based edge sealant or otherwise prepared with an edge sealing system or equivalent material'.



- ✓ BBA PAS Approved
- ✓ Prevents water ingress
- ✓ Prolongs the life of your repair
- ✓ Improves bond

Packaging

- 750ml aerosol can (12 cans per box)



Surface Defect Repair

Heat Applied Surface Defect Repair System

**PREVENTION
IS BETTER
THAN CURE**



A surface defect repair system developed to address specific areas of preventative maintenance. Through consultation with contractors and clients, it was identified that early treatment of defects in carriageways of thin surface asphalt repairs, would prevent formation of costly potholes and associated risks.

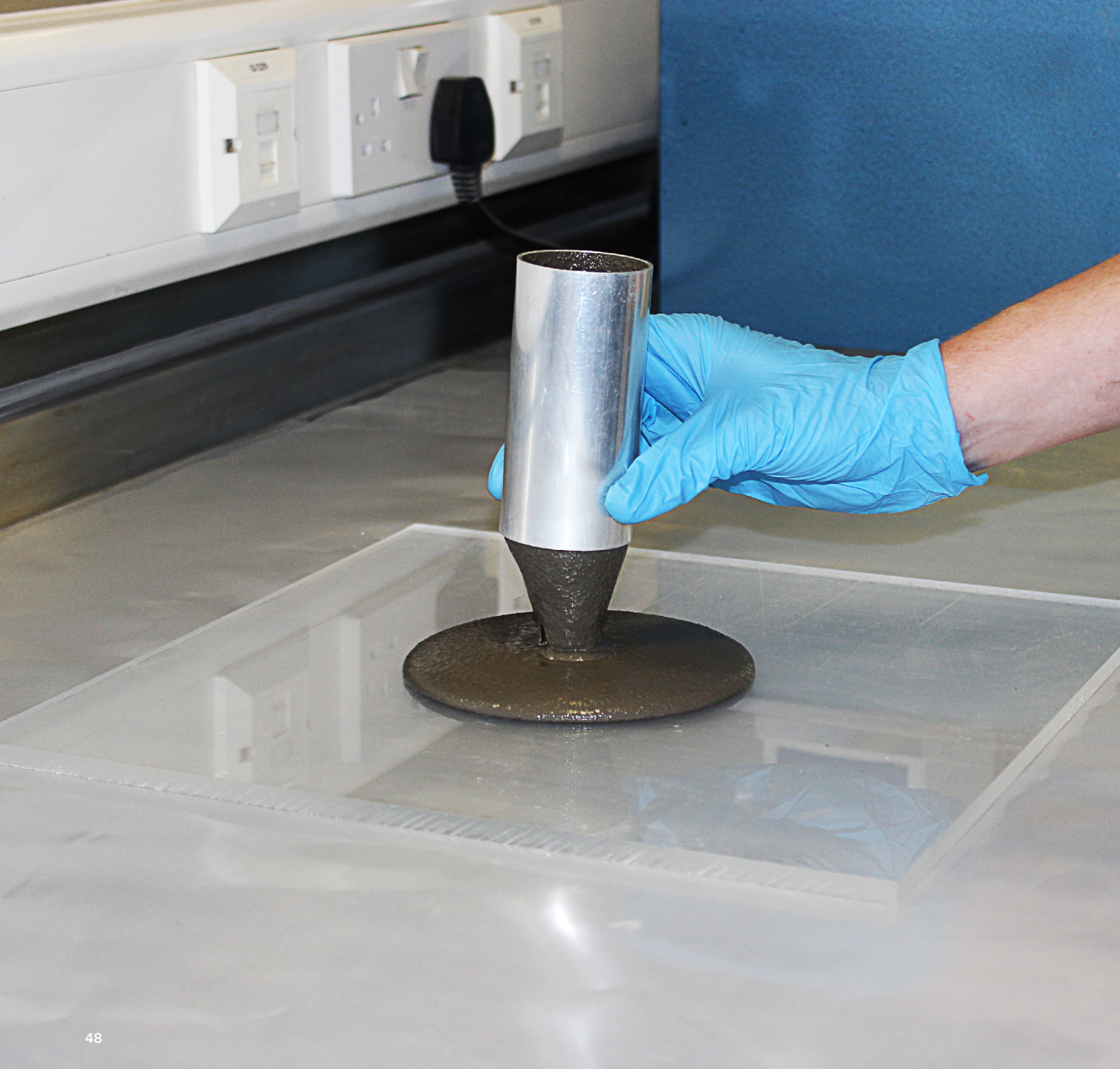
SURFACE DEFECT REPAIR is a granular thermoplastic, with anti-skid dressing that can be applied to minor defects in the carriageway. The product is heat applied and once set, gives a durable repair. It is not formulated for use on large scale repairs, which instead should be treated with our cold lay asphalt range. It is suitable for use on contracts where asset management allows for early identification of minor defects and can be built into the programme.



- ✓ Preventative maintenance
- ✓ Prolongs the life of your asset
- ✓ Easy to use
- ✓ No waste

Packaging

- 12kg plastic bag
+ 1kg of glass beads
(66 units per pallet)



Construction Materials

Specialist products for grouting and cement concentrate admixture for on-site concrete / mortar / screeds.

RSC

Rapid Setting Cement



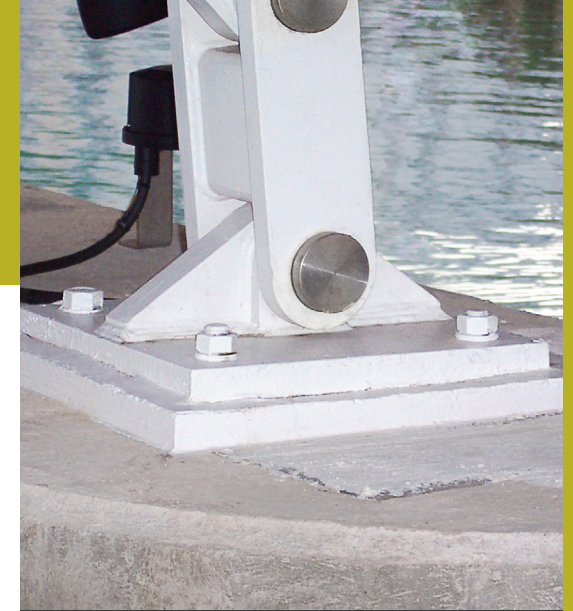
When mixed with aggregates, it produces fast setting, early high strength mortar or concrete. It is suitable for use on cable box floors, road crossings, sign and camera bases.





- **Workability:** 10-15 minutes
- 20N/mm² compressive strength in 1 hour



HF





High Flow Precision Grout



-  High strength
-  20N/mm² in 1 hour
-  Open to traffic: 1 hour
-  Cost effective

Packaging

- **20kg paper bag** (56 units per pallet)
- **20kg bucket** (40 units per pallet)
- **Bucket made from recycled material**

-  Complies with the specification for Highway Works Clause 2601
-  High flow
-  High strength
-  Can be pumped or poured

Packaging

- **25kg paper bag** (56 units per pallet)

Ideal as a bridge bearing grout as well as for the securing of stanchion base plates, machine beds and parapet legs.

- **Workability:** 60 minutes
- **Initial Set Time:** 8 hours
- **Open to traffic:** 24 hours
- **Depth:** 10mm-100mm
- Will not corrode or stain
- 70N/mm² compressive strength at 28 days



Ancillaries

The key in any reinstatement is the ancillary products available to support them. Our range of high performance ancillaries are quick and easy to apply, minimise traffic management, eliminate risk and prolong the life of your repairs.

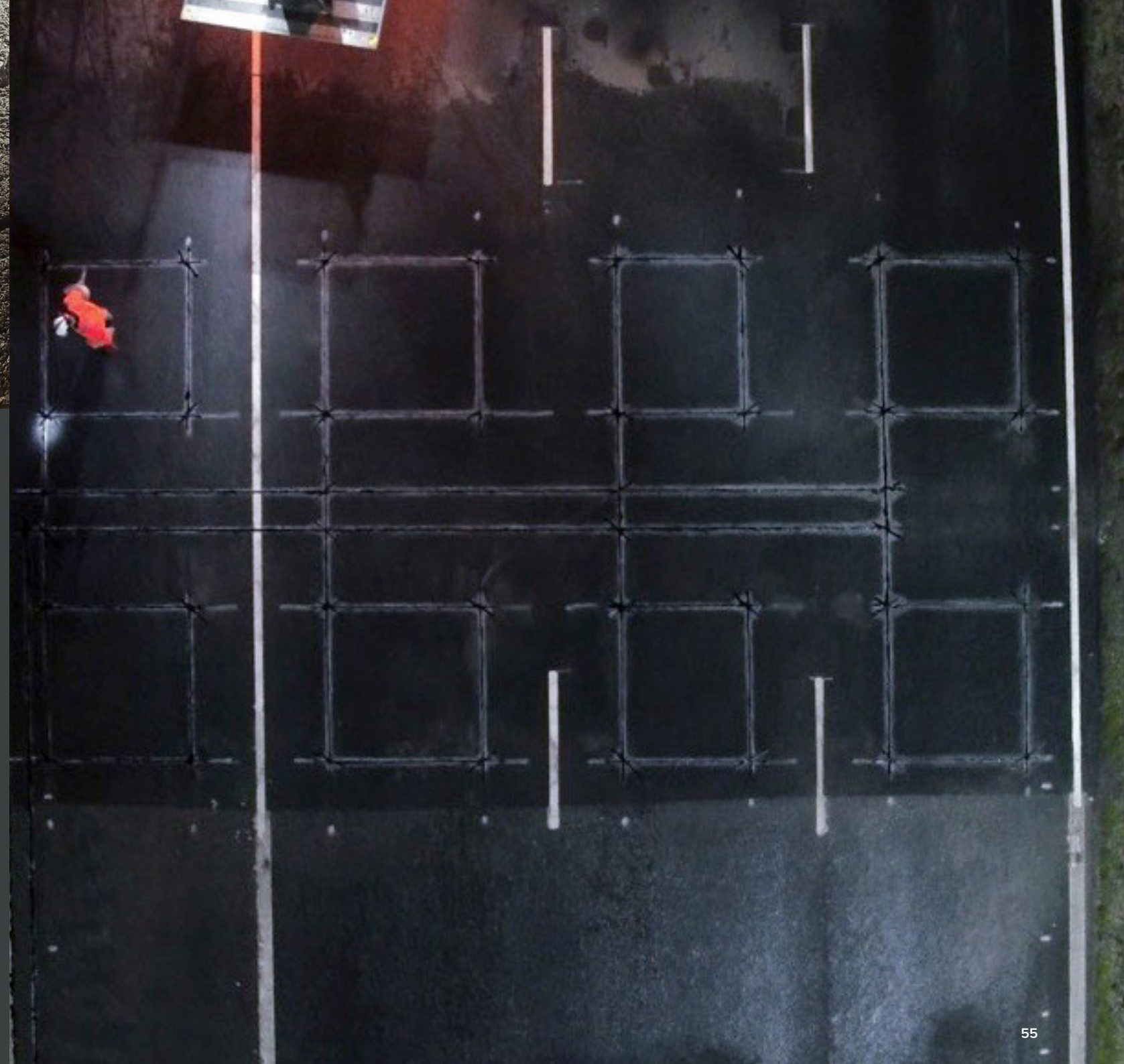
Sensor Seal

Pourable sealant



Pourable sealant for encapsulating and sealing Loop Detector Cables and Road Sensors into position in roads and highways.

- Two-part Loop Sealant for deep penetration of cut slots in roads
- Easy to apply, low viscosity, pourable consistency
- Seals and protects Loop Cables from surface moisture
- Withstands extremes of temperature
- Withstands and protects against the rigors of constant traffic
- Excellent adhesion to the walls of cut slots in all road substrate types
- Ideal as a durable joint filler and sealant for pavements and concrete cracks
- Size: 0.8kg bottle with 4.2kg tin



- ✓ Unit size 5Kg
- ✓ Pot Life: 20-25 minutes
- 🔄 Set Time: 30-35 minutes
- ✓ Tensile strength 14N/mm²

Packaging

- 20 per pallet
- Resin: 4.2Kg metal tin lever lid and handle
- Hardener: 0.8Kg screw top poly bottle



Instaband ECO®

Thermoplastic Overbanding Tape



ALSO
AVAILABLE
IN RED



Designed for asphalt roads and footpaths to prevent water ingress and progressive fretting. Suitable for use on permanent patching schemes and around utility repairs.

- Quick and easy to apply
- **Open to traffic:** 10 minutes
- Elastic qualities accommodate thermal movement
- 60 SRV
- Manufactured using 100% recycled glass particles
- Binder made from 70% renewable sources
- Colour pigments are 100% organic



PAS Approved



No waste, cut as required



Prevents water ingress immediately



Prolongs the life of your repair



Packaging

- **5m x 35mm roll**
(12 Rolls per box)

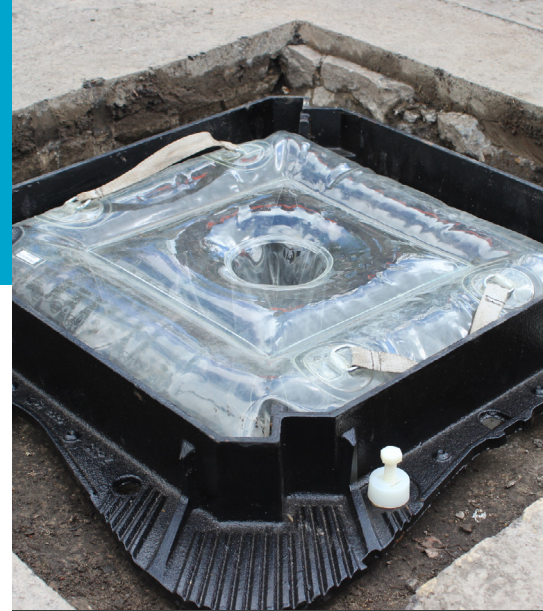
Mortar Buoy®

Access Frame Installation Aid



This inflatable device allows for a flowable mortar installation, creating a dam within seconds. The Mortar Buoy® dam prevents any mortar seeping into the access chamber and trim back areas.

- Simply fit and inflate
- Provides a seamless finish
- Saves time – no waiting around
- Environmentally friendly – can be reused



- ✓ Creates an instant dam
- ✓ Allows a flowable mortar system
- ✓ Prevents excavation debris from falling down the chamber
- ✓ Allows bespoke chamber rebuilds

Packaging

Available in a range of sizes (mm)

- 450 x 450 x 200
- 600 x 600 x 200
- 700 x 700 x 200
- 1250 x 700 x 200
- 1850 x 700 x 200
- 950 x 475 x 200



Instagrip

Anti-skid Patch Repair



For the patching and reinstating of high friction areas after maintenance work has taken place. Ideal for use on pedestrian crossings, junctions, roundabouts, footbridges, subways, steel plates and access covers.

- Easy to use
- Fast return to service
- Available in: Grey, Buff, Red, Green and Black



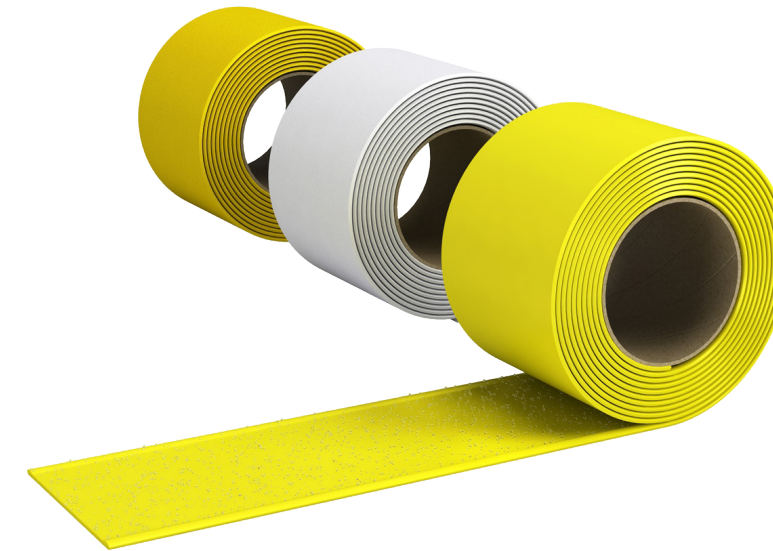
- ✓ Restores anti-skid
- ✓ Set Time: 1–2 hours
- ✓ Complete kit! Contains everything you need to complete the job

Packaging

- 15kg bucket (36 units per pallet)
- Bucket made from recycled material

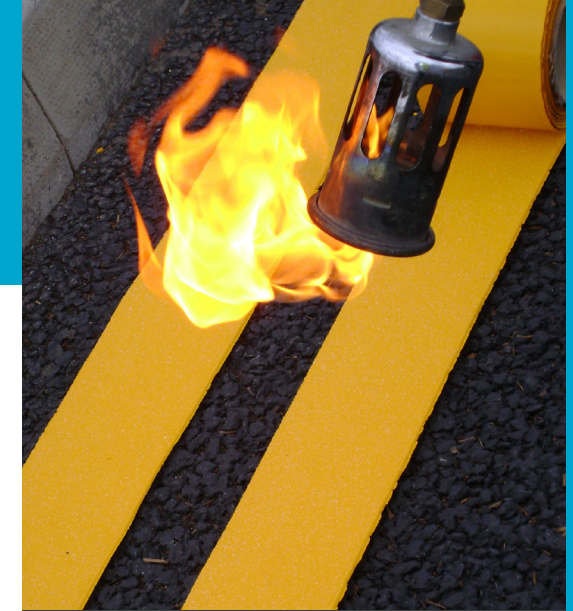
Instaline

Thermoplastic Road Marking



Ideal for the reinstatement of line areas on car parks and carriageways.

- Conforms to BS EN 1436:2007 as a road marking material
- Reflective beading for enhanced visibility and wear
- Remains flexible and easy to un-roll in temperatures as low as 5°C
- Excellent UV resistance providing long term colour fastness
- The only line that provides a skid resistance value in excess of 55, straight from the box
- Available in a range of colours: Yellow, White and Primrose
- Binder made from 70% renewable sources
- Manufactured using 90% recycled glass particles



- ✓ Anti-skid
- ✓ Reflective
- ✓ Easy application
- ✓ No waste, cut as required
- ✓ Easy to store

Packaging

- Yellow - 5m x 100mm roll (6 Rolls per box)
- White - 5m x 100mm roll (6 Rolls per box)
- Primrose - 5m x 50mm roll (12 Rolls per box)



LMP

Line Marking Paint



Ideal as an effective and quick method for line or spot marking of pothole repairs, car parks, warehouses, sports halls and building sites.

- Ideal for stenciling / free hand marking
- Semi-permanent – 3 month wear
- Available in a range of colours:
 - Red, Yellow, White and Blue
 - Use to highlight the location of electrical power lines, cables and conduits.
 - Use to mark out where gas, oil, steam or other gaseous materials are running underground.
 - Use to highlight potholes and other excavation areas due for repair.
 - Use to indicate where water pipes, water mains and portable water lines are located underground.

- ✓ Economical
- ✓ No waste
- ✓ Excellent adhesion
- ✓ Durable

Packaging

- 750ml Aerosol can (12 cans per box)

UltraCrete Accredited Reinstatement Specification



Install high specification ironwork reinstatement materials to the highest of standards with UCARS – the UltraCrete Accredited Reinstatement Specification

UltraCrete is delighted to offer the opportunity for Highway workers to become UCARS Accredited. This is a single day's vocational training course that is developed in-line with listed regulated specifications and British standards. The course consists of a morning's classroom-based theory session, followed by an afternoon getting hands-on with UltraCrete materials - mixing and applying! Upon completion, the attendee will become a recognised professional in the use of the UltraCrete portfolio of products for all carriageway reinstatements.



To find out more or to book a UCARS course, please visit:
instarmactrainingacademy.co.uk

Delegate Feedback

A brilliant day with Instarmac on their UCARS course. If you deal with any aspect of Highway Maintenance and you use any of the products, this is a brilliant course. I learnt a great deal, despite having worked on the Highway for 9 years now.



Aidan Fitzgerald
Operations Supervisor
Ringway Jacobs



The UCARS course was extremely beneficial for my team and I. Nick Holmes delivered the fundamentals of good practice in the line with Government recommendations in a formal classroom setting. We covered all aspects of casting preparation, installation and reinstatement which gave us a good grounding for the practical session in the afternoon. Getting out into the training area and installing a casting cemented the learning from the morning session. I think the course is really well put together and delivered extremely well.



Dave Colley
Regional Quality Manager
Telent

Thanks for a very comprehensive and informative training course today. It was very beneficial to allow me to understand more about the products and working times with these products, to allow me to share with the wider audience within the Telent organisation, and their partners. The course will also be very beneficial to some of our management who deal with and oversee these activities within the operations departments and I will be highlighting this at our team meeting and advising that they look to be booking their teams into this course.

Thanks to all the training team and Instarmac for their hospitality and professionalism in delivering this very useful course.

Delegate Feedback



What a brilliant day myself and my team have had with you all at Instarmac. Thank you very much. I can't recommend this course enough for companies/ crews undertaking frame and cover replacements.



Ethan Dingley
Managing Director
EMD Contractors (SW) Ltd

Nick, the instructor was excellent at keeping us engaged and is very knowledgeable, he made everyone feel at ease from the start of the training, the session helped us understand the reinstatement specification in more detail around iron works.

The facilities and the venue was superb, look forward to using UltraCrete products in the future.

Thanks again.



Sean Aldrich
Centercomms Ltd.

I personally really enjoyed your training day. It was packed with important information that will be extremely useful for my everyday workflow at PAM UK. The combination of literature and powerpoint with the hands-on activity worked really well as a tool for understanding your products and best practice processes. Nick was a great teacher, and used a variety of methods for answering any incoming questions.



PAM UK



Instarmac brands



Ready mixed and cement-based wall and floor tile adhesives, grouts and ancillaries – at the heart of every great project!

ultratileadhesives.co.uk



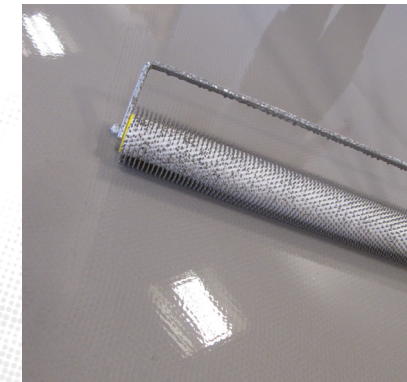
A range of bedding, priming and jointing materials that meet and exceed the strict demands of BS 7533; offering a paved construction life of over 40 years.

ultrascape.co.uk



A range of decorative texturing, drylining and coving solutions expertly formulated for ease of use, speed of completion and professional results

wondertex.co.uk



Fast-track smoothing underlayments, primers and surface damp proof membranes – providing customers with all they need for a quality commercial or industrial flooring installation.

ultra-floor.co.uk



Instarmac currently has over 50 licencees and distributors worldwide manufacturing and marketing UltraCrete's Instant Road Repair®. It has been gaining momentum across the globe and is being used in over 25 countries including Germany, Switzerland, Italy, Japan, China, Australia, New Zealand and Kenya.

instarmacinternational.com

Reducing our environmental impact

We are committed to continuously re-evaluating and reducing environmental impact to encourage a positive, long-term future.

Resources

Where feasible, we use recycled materials, such as glass in our products, and over the last 12 months, have supplied customers with over 800,000 tonnes of recycled material contained in market leading products such as Envirobed® CD534 and Enviro Mastic®. We look to do this wherever possible to reduce our reliance on declining raw materials, producing more sustainable products.

Manufacturing

We take all the necessary measures needed to ensure our products are manufactured efficiently and with as little environmental impact as possible. We are working hard with our packaging suppliers to introduce as much recycled content as possible and many of our products are now available in recycled packaging.

Recycling

No waste: we have been a zero waste to landfill site since 2014, meaning all our post production waste is reused or recycled. We operate a successful pallet recycling scheme and are in the process of converting our plastic packaging to packaging that contains recycled material and is fully recyclable.

Transport

Delivering efficiently: We now own a 37-strong fleet and invest in the most up-to-date logistics technology and efficiency procedures to ensure that we offer an award winning delivery service with a minimal carbon footprint.

Our vehicles are regularly replaced to guarantee we are using modern, smart lorries. We will be running our newly anticipated trucks on Compressed Natural Gas (CNG), which will result in a reduction of CO₂ emissions by 115 tonnes per truck per year.

Usage

Expert guidance: Our highly skilled and experienced training team annually deliver over 500+ customer training sessions to ensure the correct installation of our products, increasing the lifespan and reducing waste.



| Quick Product Guide

PAS APPROVED ACCESS FRAME INSTALLATION SYSTEM							
	Bedding Mortars					Backfill	
	Envirobed® CD534 / Red High Performance Bedding Mortar	Envirobed® CD534 Flowable / Red High Performance Bedding Mortar	M60 Rapid Strength Bedding Mortar	M60 F Rapid Strength Bedding Mortar	PY4 Polyester Resin Bedding Mortar	QC10 F Rapid Set Flowable Concrete	QC10 Rapid Set Concrete
Conforms to CD534	✓	✓			✓		
Workability at 20°C	15 mins	15 mins	5-10 mins	5-10 mins	5-10 mins	5-10 mins	5-10 mins
Set Time at 20°C	30 mins	30 mins	20 mins	20 mins	15 mins	10-20 mins	10-20 mins
Depth (mm)	10-50mm	10-75mm	10-75mm	10-75mm	5-50mm	30-500mm	30-250mm
Open to traffic	1 hr	1 hr	1 hr	1 hr	1 hr	90 mins	2 hrs
Compressive strength	53N/mm ² in 3 hrs	44N/mm ² in 3 hrs	20N/mm ² in 1 hr	25N/mm ² in 1 hr	61.5N/mm ² in 1 hr	20N/mm ² in 90 mins	20N/mm ² in 2 hrs
Tensile strength	6.10N/mm ² in 3 hrs	5.5N/mm ² in 3 hrs		7.41N/mm ² in 1 hr			
Flexural strength	12N/mm ² in 3 hrs	9.5N/mm ² in 3 hrs					
For more info see page:	12 & 14	13 & 15	16	17	22	26	27

PAS APPROVED ACCESS FRAME INSTALLATION SYSTEM							
Cold Joint Sealant		Surface Course					Overbanding
SCJ Cold Joint Seal and Tack Coat Spray	Sensor Seal	Instant Road Repair 6mm Cold Lay Asphalt Concrete	Instant Road Repair 10mm Cold Lay Asphalt Concrete	Tough Patch® 6mm Permanent Cold Lay Surface Material	Tough Patch® 10mm Permanent Cold Lay Surface Course	Enviro Mastic® Hot Applied, Polymer Modified Mastic Asphalt	Instaband ECO® Thermoplastic Overbanding Tape
	10-15 mins						
Effective in any application that uses bitumen based asphalt	30-35 mins						
	N/A	15-60mm	30-100mm	15-60mm	30-100mm	30-150mm	
	N/A	Instantly	Instantly	Instantly	Instantly	1 hr	10 mins
	N/A						
	14N/mm ²						
	N/A						
44		40	41	38	39	37	55



INSTARMAC[®]

Innovation, Confidence, Durability

Instarmac Group plc

Head Office

Danny Morson Way
Birch Coppice Business Park
Dordon, Tamworth
Staffordshire B78 1SE
United Kingdom

t: +44 (0) 1827 254400
email@instarmac.co.uk
instarmac.co.uk

Instarmac Group plc

Scotland & Ireland Office

Suite 1 E/F Liberty House
15 Cromarty House
Rosyth,
Fife KY11 2YB

t: +44 (0)141 260 9051
scotland@instarmac.co.uk
ireland@instarmac.co.uk

instarmac.co.uk

Unless L2125
CH2IB (90.41) Yq4

Revised: February 2024

Bedding Mortars Page Cutting Path

Concretes Cutting Path

Hot and cold lay surfacing materials Cutting Path

Construction materials Cutting Path

Full Tabs